

KDR Ab

[Images\(1\)](#)

Cat.#: BF0068 Concn.: ~1mg/ml Mol.Wt.: 152kDa
Size: Source: Mouse Clonality: Monoclonal

Application: ELISA 1:10000, WB 1:500-1:2000, IF/ICC 1:200-1:1000, FCM
1:200-1:400

*The optimal dilutions should be determined by the end user.

Reactivity: Human

Storage: Mouse IgG1 in phosphate buffered saline (without Mg²⁺ and Ca²⁺), pH
7.4, 150mM NaCl, 0.02% sodium azide and 50% glycerol. Store at -20 °C.
Stable for 12 months from date of receipt.

Purification: Affinity-chromatography.

Immunogen: Purified recombinant fragment of human KDR expressed in E. Coli.

Uniprot: P35968

Description: VEGFR-2 is a receptor tyrosine kinase of the VEGFR family. High affinity
receptor for VEGF and VEGF-C. Ligand binding induces
autophosphorylation and activation. Activated receptor recruits proteins
including Shc, GRB2, PI3K, Nck, SHP-1 and SHP-2. Plays a key role in
vascular development and regulation of vascular permeability.

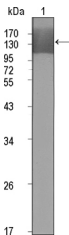


Figure 1: Western blot analysis using KDR mouse mAb against extracellular domain of human KDR (aa20-764).

IMPORTANT: For western blot, incubate membrane with diluted primary Ab in 5% w/v milk, 1X TBS, 0.1% Tween@20 at 4°C with gentle shaking, overnight.

For Research Use Only. Not for use in diagnostic and therapeutic procedures. Not for resale without express authorization.