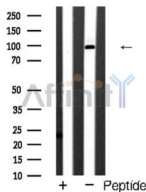


## mGluR4 Ab

[Images\(2\)](#)

Cat.#: AF5459	Concn.: ~1mg/ml	Mol.Wt.: 98 kDa
Size:	Source: Rabbit	Clonality: Polyclonal
Application:	WB 1:500-1:2000, IHC 1:50-1:200, IF/ICC 1:100-1:500 *The optimal dilutions should be determined by the end user.	
Reactivity:	Human,Mouse,Rat	
Storage:	Rabbit IgG in phosphate buffered saline , pH 7.4, 150mM NaCl, 0.02% sodium azide and 50% glycerol. Store at -20 °C. Stable for 12 months from date of receipt.	
Purification:	The antiserum was purified by peptide affinity chromatography using SulfoLink™ Coupling Resin (Thermo Fisher Scientific).	
Immunogen:	A synthesized peptide derived from human mGluR4, corresponding to a region within C-terminal amino acids.	
Uniprot:	Q14833	
Description:	Ionotropic glutamate receptor. L-glutamate acts as an excitatory neurotransmitter at many synapses in the central nervous system. Binding of the excitatory neurotransmitter L-glutamate induces a conformation change, leading to the opening of the cation channel,	



Western blot analysis of GluR4 expression in JK cells

**IMPORTANT:** For western blot, incubate membrane with diluted primary Ab in 5% w/v milk , 1X TBS, 0.1% Tween@20 at 4°C with gentle shaking, overnight.

For Research Use Only. Not for use in diagnostic and therapeutic procedures. Not for resale without express authorization.