

APRIL/TNFSF13 Ab

[Images\(1\)](#)

Cat.#: AF5377
Size:

Concn.: ~1mg/ml
Source: Rabbit

Mol.Wt.: 27 kDa
Clonality: Polyclonal

Application:

WB 1:500-1:2000, IHC 1:50-1:200, IF/ICC 1:100-1:500

*The optimal dilutions should be determined by the end user.

Reactivity:

Human, Mouse, Rat

Storage:

Rabbit IgG in phosphate buffered saline, pH 7.4, 150mM NaCl, 0.02% sodium azide and 50% glycerol. Store at -20 °C. Stable for 12 months from date of receipt.

Purification:

The antiserum was purified by peptide affinity chromatography using SulfoLink™ Coupling Resin (Thermo Fisher Scientific).

Immunogen:

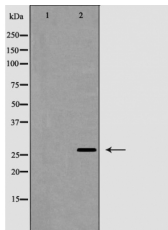
A synthesized peptide derived from human APRIL/TNFSF13, corresponding to a region within the internal amino acids.

Uniprot:

O75888

Description:

Cytokine that binds to TNFRSF13B/TACI and to TNFRSF17/BCMA. May be implicated in the regulation of tumor cell growth. May be involved in monocyte/macrophage-mediated immunological processes.



Western blot analysis of TALL-2 expression in COLO205 cells. The lane on the left was treated with the antigen-specific peptide.

IMPORTANT: For western blot, incubate membrane with diluted primary Ab in 5% w/v milk, 1X TBS, 0.1% Tween@20 at 4°C with gentle shaking, overnight.

For Research Use Only. Not for use in diagnostic and therapeutic procedures. Not for resale without express authorization.