

TUBB3 Ab

[Images\(1\)](#)

Cat.#: BF0572	Concn.: ~1mg/ml	Mol.Wt.: 50kDa
Size:	Source: Mouse	Clonality: Monoclonal
 Application:	ELISA 1:10000, WB 1:500-1:2000, IF/ICC 1:200-1:1000, FCM 1:200-1:400	
Reactivity:	Human *The optimal dilutions should be determined by the end user.	
Storage:	Mouse IgG1 in phosphate buffered saline (without Mg ²⁺ and Ca ²⁺), pH 7.4, 150mM NaCl, 0.02% sodium azide and 50% glycerol. Store at -20 °C. Stable for 12 months from date of receipt.	
Purification:	Affinity-chromatography.	
Immunogen:	Purified recombinant fragment of human TUBB3 expressed in E. Coli.	
Uniprot:	Q13509	
Description:	<p>Tubulin, beta 3, also known as TUBB3. Tubulin is the major constituent of microtubules. It binds two moles of GTP, one at an exchangeable site on the beta chain and one at a non exchangeable site on the alpha-chain. Tubulin is a highly conserved protein with a molecular weight of ~50 kD. Microtubules play key roles in chromosome segregation in mitosis, intracellular transport, ciliary and flagellar bending, and structural support of the cytoskeleton. The two main tubulin isoforms, α- and β-tubulin, are usually products of separate genes. The β-tubulin family includes six expressed genes that produce the polypeptide isoforms known as Classes I through VI, each of which have a distinct pattern of expression.</p>	

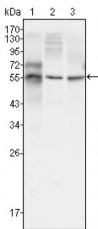


Figure 1: Western blot analysis using TUBB3 mouse mAb against HepG2 (1), A549 (2) and HeLa (3) cell lysate.

IMPORTANT: For western blot, incubate membrane with diluted primary Ab in 5% w/v milk, 1X TBS, 0.1% Tween@20 at 4°C with gentle shaking, overnight.

For Research Use Only. Not for use in diagnostic and therapeutic procedures. Not for resale without express authorization.