

MLCK Ab

[References\(3\)](#) [Images\(5\)](#)

Cat.#: AF5314
Size:

Concn.: ~1mg/ml
Source: Rabbit

Mol.Wt.: 211 kDa.
Clonality: Polyclonal

Application:

WB 1:500-1:2000

*The optimal dilutions should be determined by the end user.

Reactivity:

Human,Mouse,Rat

Storage:

Rabbit IgG in phosphate buffered saline , pH 7.4, 150mM NaCl, 0.02% sodium azide and 50% glycerol. Store at -20 °C. Stable for 12 months from date of receipt.

Purification:

The antiserum was purified by peptide affinity chromatography using SulfoLink™ Coupling Resin (Thermo Fisher Scientific).

Immunogen:

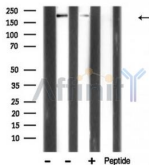
A synthesized peptide derived from human MLCK, corresponding to a region within C-terminal amino acids.

Uniprot:

Q15746

Description:

Calcium/calmodulin-dependent enzyme implicated in smooth muscle contraction via phosphorylation of myosin light chains (MLC). Also regulates actin-myosin interaction through a non-kinase activity (By similarity). Implicated in the regulation of endothelial as well as vascular permeability.



Western blot analysis of extracts from various samples, using MYLK Ab.

Lane 1: Mouse liver lysates;

Lane 2: Mouse kidney lysates;

Lane 3: Mouse kidney lysates treated with blocking peptide;

IMPORTANT: For western blot, incubate membrane with diluted primary Ab in 5% w/v milk , 1X TBS, 0.1% Tween@20 at 4°C with gentle shaking, overnight.

For Research Use Only. Not for use in diagnostic and therapeutic procedures. Not for resale without express authorization.