

PDGFRbeta Ab

[Images\(1\)](#)

Cat.#: BF0289	Concn.: ~1mg/ml	Mol.Wt.: 190kDa
Size:	Source: Mouse	Clonality: Monoclonal

Application: ELISA 1:10000, WB 1:500-1:2000
 *The optimal dilutions should be determined by the end user.

Reactivity: Human,Mouse

Storage: Mouse IgG1 in phosphate buffered saline (without Mg²⁺ and Ca²⁺), pH 7.4, 150mM NaCl, 0.02% sodium azide and 50% glycerol. Store at -20 °C. Stable for 12 months from date of receipt.

Purification: Affinity-chromatography.

Immunogen: Purified recombinant fragment of human PDGFRbeta expressed in E. Coli.

Uniprot: P09619

Description: Platelet-derived growth factor receptor, beta polypeptide, also known as PDGFRB, PDGFRbeta or CD140B. It is a cell surface tyrosine kinase receptor for members of the platelet-derived growth factor family. This family exist as several disulphide-bonded, dimeric isoforms (PDGF AA, PDGF AB, PDGF BB, PDGF CC and PDGF DD) that bind in a specific pattern to two closely related receptor tyrosine kinases, PDGF receptor ? (PDGFR?) and PDGF receptor beta (PDGFRbeta). These growth factors are mitogens for cells of mesenchymal origin. PDGFRB is flanked on chromosome 5 by the genes for granulocyte-macrophage colony-stimulating factor and macrophage-colony stimulating factor receptor; all three genes may be implicated in the 5-q syndrome.

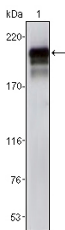


Figure 1: Western blot analysis using PDGFR? mouse mAb against NIH/3T3 cell lysates (1).

IMPORTANT: For western blot, incubate membrane with diluted primary Ab in 5% w/v milk , 1X TBS, 0.1% Tween@20 at 4°C with gentle shaking, overnight.

For Research Use Only. Not for use in diagnostic and therapeutic procedures. Not for resale without express authorization.