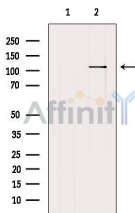


EPHA1 Ab

[Images\(1\)](#)

Cat.#: AF5257	Concn.: ~1mg/ml	Mol.Wt.: 108 kDa
Size:	Source: Rabbit	Clonality: Polyclonal

Application:	WB 1:500-1:2000, IF/ICC 1:100-1:500 *The optimal dilutions should be determined by the end user.
Reactivity:	Human
Storage:	Rabbit IgG in phosphate buffered saline , pH 7.4, 150mM NaCl, 0.02% sodium azide and 50% glycerol. Store at -20 °C. Stable for 12 months from date of receipt.
Purification:	The antiserum was purified by peptide affinity chromatography using SulfoLink™ Coupling Resin (Thermo Fisher Scientific).
Immunogen:	A synthesized peptide derived from human EPHA1, corresponding to a region within the internal amino acids.
Uniprot:	P21709
Description:	The Eph family of receptors comprises the largest known family of receptor tyrosine kinases. Ligands of Eph family receptors are structurally related membrane-bound proteins that can be subdivided into two major subclasses, ephrin-A and ephrin-B. Expression of Eph receptors is tissue specific and appears to be tied to developmental events.



Western blot analysis of extracts from HepG2, using EPHA1 Ab. The lane on the left was treated with blocking peptide.

IMPORTANT: For western blot, incubate membrane with diluted primary Ab in 5% w/v milk , 1X TBS, 0.1% Tween@20 at 4°C with gentle shaking, overnight.

For Research Use Only. Not for use in diagnostic and therapeutic procedures. Not for resale without express authorization.