

## AMPK alpha 1 Ab

[References\(1\)](#) [Images\(3\)](#)

|               |                 |                       |
|---------------|-----------------|-----------------------|
| Cat.#: BF2001 | Concn.: ~1mg/ml | Mol.Wt.: 64KD         |
| Size:         | Source: Mouse   | Clonality: Monoclonal |

**Application:** WB 1:500-1:2000, IHC 1:50-1:200  
\*The optimal dilutions should be determined by the end user.

**Reactivity:** Human, Mouse, Rat, Monkey

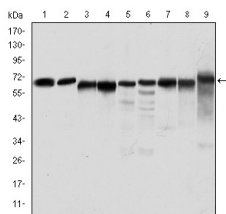
**Storage:** 1mg/ml in PBS, pH 7.4, containing 0.02% sodium azide and 50% glycerol. Store at -20°C. Stable for one year from the date of shipment.. Avoid freeze / thaw cycles. Store at -20 °C. Stable for 12 months from date of receipt.

**Purification:** affinity purification.

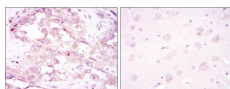
**Immunogen:** Purified recombinant fragment of Human AMPK alpha 1 expressed in E. Coli.

**Uniprot:** Q13131

**Description:** The protein belongs to the ser/thr protein kinase family. It is the catalytic subunit of the 5'-prime-AMP-activated protein kinase (AMPK). AMPK is a cellular energy sensor conserved in all eukaryotic cells. The kinase activity of AMPK is activated by the stimuli that increase the cellular AMP/ATP ratio.



Western blot analysis using PRKAA1 mouse mAb against Jurkat (1), HeLa (2), HepG2 (3), MCF-7 (4), Cos7 (5), NIH/3T3 (6), K562 (7), HEK293 (8), and PC-12 (9) cell lysate.



Immunohistochemical analysis of paraffin-embedded ovarian cancer (left) and brain tissues (right) using PRKAA1 mouse mAb with DAB staining.

**IMPORTANT:** For western blot, incubate membrane with diluted primary Ab in 5% w/v milk, 1X TBS, 0.1% Tween@20 at 4°C with gentle shaking,

---

overnight.

---

For Research Use Only. Not for use in diagnostic and therapeutic procedures. Not for resale without express authorization.