

## KLF15 Ab

[Images\(1\)](#)

Cat.#: BF0574	Concn.: ~1mg/ml	Mol.Wt.: 44kDa
Size:	Source: Mouse	Clonality: Monoclonal

**Application:** ELISA 1:10000, WB 1:500-1:2000  
\*The optimal dilutions should be determined by the end user.

**Reactivity:** Human

**Storage:** Mouse IgG1 in phosphate buffered saline (without Mg<sup>2+</sup> and Ca<sup>2+</sup>), pH 7.4, 150mM NaCl, 0.02% sodium azide and 50% glycerol. Store at -20 °C. Stable for 12 months from date of receipt.

**Purification:** Affinity-chromatography.

**Immunogen:** Purified recombinant fragment of human KLF15 expressed in E. Coli.

**Uniprot:** Q9UIH9

**Description:** KLF15 (Kruppel-like factor 15), also known as KKLF, DKFZp779M1320. Entrez Protein NP\_054798. Sequence analysis predicted that the 416 amino acid KLF15 protein, which is 84% identical to the rat Klf15 protein, contains 3 zinc finger motifs at its C terminus, N-terminal serine-rich stretches, and a central proline-rich segment. KLF15, a kidney-enriched Krueppel-like factor, is a transcriptional activator that binds the CLCNKA promoter. KLF15, which is a nuclear protein, is expressed primarily in liver, heart, skeletal muscle and kidney tissues but is not detected in lymphoid tissues or bone marrow. KLF15 is an important regulator of GLUT4 in both adipose and muscle tissues.

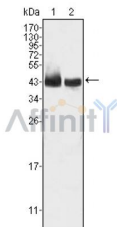


Figure 1: Western blot analysis using KLF15 mouse mAb against HepG2 (1) and SMMC-7721 (2) cell lysate.

**IMPORTANT:** For western blot, incubate membrane with diluted primary Ab in 5% w/v milk, 1X TBS, 0.1% Tween@20 at 4°C with gentle shaking, overnight.

For Research Use Only. Not for use in diagnostic and therapeutic procedures. Not for resale without express authorization.