

R-spondin1 Ab

[Images\(1\)](#)

Cat.#: BF0511	Concn.: ~1mg/ml	Mol.Wt.: 28.9kDa
Size:	Source: Mouse	Clonality: Monoclonal

Application: ELISA 1:10000, WB 1:500-1:2000
 *The optimal dilutions should be determined by the end user.

Reactivity: Human

Storage: Mouse IgG1 in phosphate buffered saline (without Mg²⁺ and Ca²⁺), pH 7.4, 150mM NaCl, 0.02% sodium azide and 50% glycerol. Store at -20 °C. Stable for 12 months from date of receipt.

Purification: Affinity-chromatography.

Immunogen: Purified recombinant fragment of human R-spondin1 expressed in E. Coli.

Uniprot: Q2MKA7

Description: R-spondin1, also known as RSPO1, CRISTIN3, FLJ40906. Entrez Protein NP_001033722.1. It is a member of the R-spondin family and a 28.9kDa secreted activator protein with two cystein-rich, furin-like domains and one thrombospondin type 1 domain. In mice, the protein induces the rapid onset of crypt cell proliferation and increases intestinal epithelial healing, providing a protective effect against chemotherapy-induced adverse effects. It is activator of the beta-catenin signaling cascade, leading to TCF-dependent gene activation. Acts both in the canonical Wnt/beta-catenin-dependent pathway, possibly via a direct interaction with Wnt proteins, and in a Wnt-independent beta catenin pathway through a receptor signaling pathway that may not use frizzled/LRP receptors.

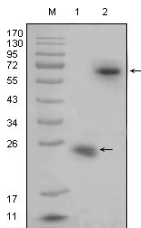


Figure 1: Western blot analysis using R-spondin1 mouse mAb against recombinant R-spondin1 protein (1) and R-spondin1(aa21-263)-hIgGFc transfected HEK293 cell lysate(2).

IMPORTANT: For western blot, incubate membrane with diluted primary Ab in 5% w/v milk , 1X TBS, 0.1% Tween@20 at 4°C with gentle shaking, overnight.

For Research Use Only. Not for use in diagnostic and therapeutic procedures. Not for resale without express authorization.