

## TAS2R16 Ab

[Images\(1\)](#)

Cat.#: DF5160  
Size:

Concn.: ~1mg/ml  
Source: Rabbit

Mol.Wt.: 34 KD  
Clonality: Polyclonal

Application: WB 1:500-1:1000, IF/ICC 1:100-1:500  
\*The optimal dilutions should be determined by the end user.

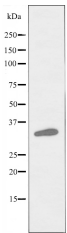
Reactivity: Human

Storage: Rabbit IgG in phosphate buffered saline , pH 7.4, 150mM NaCl, 0.02% sodium azide and 50% glycerol. Store at -20 °C. Stable for 12 months from date of receipt.

Purification: The antiserum was purified by peptide affinity chromatography using SulfoLink™ Coupling Resin (Thermo Fisher Scientific).

Immunogen: A synthesized peptide derived from human TAS2R16, corresponding to a region within the internal amino acids.

Uniprot: Q9NYV7



Western blot analysis of extracts from MCF-7 cells, using TAS2R16 Ab.

**IMPORTANT:** For western blot, incubate membrane with diluted primary Ab in 5% w/v milk , 1X TBS, 0.1% Tween@20 at 4°C with gentle shaking, overnight.

For Research Use Only. Not for use in diagnostic and therapeutic procedures. Not for resale without express authorization.