

# Mammaglobin-1 Ab

[Images\(1\)](#)

|               |                 |                       |
|---------------|-----------------|-----------------------|
| Cat.#: BF0291 | Concn.: ~1mg/ml | Mol.Wt.: 11kDa        |
| Size:         | Source: Mouse   | Clonality: Monoclonal |

**Application:** ELISA 1:10000, WB 1:500-1:2000  
 \*The optimal dilutions should be determined by the end user.

**Reactivity:** Human

**Storage:** Mouse IgG1 in phosphate buffered saline (without Mg<sup>2+</sup> and Ca<sup>2+</sup>), pH 7.4, 150mM NaCl, 0.02% sodium azide and 50% glycerol. Store at -20 °C. Stable for 12 months from date of receipt.

**Purification:** Affinity-chromatography.

**Immunogen:** Purified recombinant fragment of human Mammaglobin-1 expressed in E. Coli.

**Uniprot:** Q13296

**Description:** Mammaglobin is a gene that is expressed almost exclusively in the normal breast epithelium and human breast cancer. It is a member of the secretoglobulin gene family and forms a heterodimer with lipophilin B. It has been suggested that mammaglobin may be a useful marker for breast cancer clinical research. Studies investigating the detection of mRNA by RT PCR from circulating carcinoma cells in the peripheral blood of breast cancer patients have shown that mammaglobin is a highly specific marker and correlates with several prognostic factors, such as lymph node involvement.

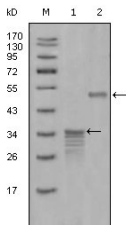


Figure 1: Western blot analysis using Mammaglobin-1 mouse mAb against full-length GST Mammaglobin-1 (1) and full-length MBP Mammaglobin-1 (aa1-193) recombinant protein (2).

**IMPORTANT:** For western blot, incubate membrane with diluted primary Ab in 5% w/v milk, 1X TBS, 0.1% Tween@20 at 4°C with gentle shaking, overnight.

For Research Use Only. Not for use in diagnostic and therapeutic procedures. Not for resale without express authorization.