

## PEG10 Ab

[Images\(1\)](#)

Cat.#: BF0134                                      Concn.: ~1mg/ml                                      Mol.Wt.: 80kDa  
Size:    Source: Mouse    Clonality: Monoclonal

Application:                                      ELISA 1:10000, WB 1:500-1:2000, IHC 1:200-1:1000, IF/ICC  
1:200-1:1000

\*The optimal dilutions should be determined by the end user.

Reactivity:                                      Human

Storage:                                      Mouse IgG1 in phosphate buffered saline (without Mg<sup>2+</sup> and Ca<sup>2+</sup>), pH  
7.4, 150mM NaCl, 0.02% sodium azide and 50% glycerol. Store at -20 °C.  
Stable for 12 months from date of receipt.

Purification:                                      Affinity-chromatography.

Immunogen:                                      Purified recombinant fragment of human PEG10 expressed in E. Coli.

Uniprot:                                      Q86TG7

Description:                                      PEG10: paternally expressed 10. This gene includes two overlapping  
reading frames of the same transcript encoding distinct isoforms. The  
shorter isoform has a CCHC-type zinc finger motif containing a sequence  
characteristic of gag proteins of most retroviruses and some  
retrotransposons, and it functions in part by interacting with members of the  
TGF-beta receptor family. The longer isoform has the active-site DSG  
consensus sequence of the protease domain of pol proteins. The longer  
isoform is the result of -1 translational frameshifting that is also seen in  
some retroviruses. Expression of these two isoforms only comes from the  
paternal allele due to imprinting. Increased gene expression (as observed by  
an increase in mRNA levels) is associated with hepatocellular carcinomas.

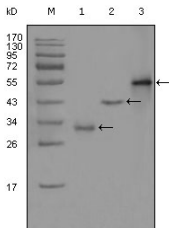


Figure 1: Western blot analysis using PEG10 mouse mAb against truncated Trx-PEG10 recombinant protein (1), truncated GST-PEG10 (aa1-120) recombinant protein (2) and full-length PEG10 (aa1-325)-hIgGFc transfected CHO-K1 cell lysates (3).

**IMPORTANT:** For western blot, incubate membrane with diluted primary Ab in 5% w/v milk , 1X TBS, 0.1% Tween@20 at 4°C with gentle shaking, overnight.