

# LAMB1 Ab

[Images\(1\)](#)

Cat.#: BF0229	Concn.: ~1mg/ml	Mol.Wt.: 198kDa
Size:	Source: Mouse	Clonality: Monoclonal

**Application:** ELISA 1:10000, WB 1:500-1:2000, IHC 1:200-1:1000  
 \*The optimal dilutions should be determined by the end user.

**Reactivity:** Human

**Storage:** Mouse IgG1 in phosphate buffered saline (without Mg<sup>2+</sup> and Ca<sup>2+</sup>), pH 7.4, 150mM NaCl, 0.02% sodium azide and 50% glycerol. Store at -20 °C. Stable for 12 months from date of receipt.

**Purification:** Affinity-chromatography.

**Immunogen:** Purified recombinant fragment of human LAMB1 expressed in E. Coli.

**Uniprot:** P07942

**Description:** Laminins, a family of extracellular matrix glycoproteins, are the major noncollagenous constituent of basement membranes. They have been implicated in a wide variety of biological processes including cell adhesion, differentiation, migration, signaling, neurite outgrowth and metastasis. Laminins are composed of 3 non identical chains: laminin alpha, beta and gamma (formerly A, B1, and B2, respectively) and they form a cruciform structure consisting of 3 short arms, each formed by a different chain, and a long arm composed of all 3 chains. Each laminin chain is a multidomain protein encoded by a distinct gene. Several isoforms of each chain have been described.

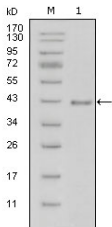


Figure 1: Western blot analysis using LAMB1 mouse mAb against truncated LAMB1-His recombinant protein (1).

**IMPORTANT:** For western blot, incubate membrane with diluted primary Ab in 5% w/v milk , 1X TBS, 0.1% Tween@20 at 4°C with gentle shaking, overnight.

For Research Use Only. Not for use in diagnostic and therapeutic procedures. Not for resale without express authorization.