

EP300 Ab

[Images\(1\)](#)

Cat.#: BF0324	Concn.: ~1mg/ml	Mol.Wt.: 300kDa
Size:	Source: Mouse	Clonality: Monoclonal

Application:	ELISA 1:10000, WB 1:500-1:2000 *The optimal dilutions should be determined by the end user.
Reactivity:	Human
Storage:	Mouse IgG1 in phosphate buffered saline (without Mg ²⁺ and Ca ²⁺), pH 7.4, 150mM NaCl, 0.02% sodium azide and 50% glycerol. Store at -20 °C. Stable for 12 months from date of receipt.
Purification:	Affinity-chromatography.
Immunogen:	Purified recombinant fragment of human EP300 expressed in E. Coli.
Uniprot:	Q09472
Description:	p300 is a histone acetyltransferase and transcriptional co-activator that regulates transcription via chromatin remodeling. Acetylates all four core histones in nucleosomes. Related to CPB (CREB-binding protein), and like CPB can stimulate transcription through activation of CREB. Specifically inhibited by the adenovirus oncoprotein E1A. A co-activator of HIF1A (hypoxia-inducible factor 1 alpha), and thus plays a role in the stimulation of hypoxia-induced genes such as VEGF. Mediates cAMP-gene regulation by binding specifically to phosphorylated CREB protein. Methylated at R580 and R604 in the KIX domain by CARM1, which blocks association with CREB, inhibits CREB signaling and activates the apoptotic response. Also methylated at R2142 by CARM1, which impairs interaction with NCoA2.

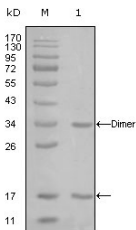


Figure 1: Western blot analysis using EP300 mouse mAb against truncated EP300-His recombinant protein (1).

IMPORTANT: For western blot, incubate membrane with diluted primary Ab in 5% w/v milk, 1X TBS, 0.1% Tween@20 at 4°C with gentle shaking, overnight.

For Research Use Only. Not for use in diagnostic and therapeutic procedures. Not for resale without express authorization.