

CSF2 Ab

[Images\(1\)](#)

| | | |
|---------------|-----------------|-----------------------|
| Cat.#: BF0506 | Concn.: ~1mg/ml | Mol.Wt.: 16kDa |
| Size: | Source: Mouse | Clonality: Monoclonal |

| | |
|---------------|---|
| Application: | ELISA 1:10000, WB 1:500-1:2000 *The optimal dilutions should be determined by the end user. |
| Reactivity: | Human |
| Storage: | Mouse IgG1 in phosphate buffered saline (without Mg ²⁺ and Ca ²⁺), pH 7.4, 150mM NaCl, 0.02% sodium azide and 50% glycerol. Store at -20 °C. Stable for 12 months from date of receipt. |
| Purification: | Affinity-chromatography. |
| Immunogen: | Purified recombinant fragment of human CSF2 expressed in E. Coli. |
| Uniprot: | P04141 |
| Description: | The protein encoded by this gene is a cytokine that controls the production, differentiation, and function of granulocytes and macrophages. The active form of the protein is found extracellularly as a homodimer. This gene has been localized to a cluster of related genes at chromosome region 5q31, which is known to be associated with interstitial deletions in the 5q-syndrome and acute myelogenous leukemia. Other genes in the cluster include those encoding interleukins 4, 5, and 13. |

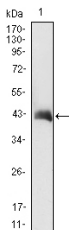


Figure 1: Western blot analysis using CSF2 mAb against CSF2(AA: 18-144)-hIgGFc transfected HEK293 cell lysate.

IMPORTANT: For western blot, incubate membrane with diluted primary Ab in 5% w/v milk , 1X TBS, 0.1% Tween@20 at 4°C with gentle shaking, overnight.

For Research Use Only. Not for use in diagnostic and therapeutic procedures. Not for resale without express authorization.