

## EphA3 Ab

[Images\(1\)](#)

Cat.#: BF0607                      Concn.: ~1mg/ml                      Mol.Wt.: 110kDa  
Size:                                      Source: Mouse                              Clonality: Monoclonal

**Application:** ELISA 1:10000, WB 1:500-1:2000  
\*The optimal dilutions should be determined by the end user.

**Reactivity:** Human

**Storage:** Mouse IgG1 in phosphate buffered saline (without Mg<sup>2+</sup> and Ca<sup>2+</sup>), pH 7.4, 150mM NaCl, 0.02% sodium azide and 50% glycerol. Store at -20 °C. Stable for 12 months from date of receipt.

**Purification:** Affinity-chromatography.

**Immunogen:** Purified recombinant fragment of human EphA3 expressed in E. Coli.

**Uniprot:** P29320/P54764/P54756

**Description:** EphA3: EPH receptor A3. This gene belongs to the ephrin receptor subfamily of the protein-tyrosine kinase family. EPH and EPH-related receptors have been implicated in mediating developmental events, particularly in the nervous system. Receptors in the EPH subfamily typically have a single kinase domain and an extracellular region containing a Cys-rich domain and 2 fibronectin type III repeats. The ephrin receptors are divided into 2 groups based on the similarity of their extracellular domain sequences and their affinities for binding ephrin-A and ephrin-B ligands. This gene encodes a protein that binds ephrin-A ligands. Two alternatively spliced transcript variants have been described for this gene.

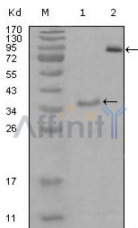


Figure 1: Western blot analysis using EphA3 mouse mAb against truncated Trx-EphA3 recombinant protein (1) and truncated EphA3(aa566-983)-hlgGfc transfected CHO-K1 cell lysate(2).

**IMPORTANT:** For western blot, incubate membrane with diluted primary Ab in 5% w/v milk , 1X TBS, 0.1% Tween@20 at 4°C with gentle shaking, overnight.

For Research Use Only. Not for use in diagnostic and therapeutic procedures. Not for resale without express authorization.