

# ABL1 Ab

[Images\(1\)](#)

Cat.#: BF0419	Concn.: ~1mg/ml	Mol.Wt.: 122kDa
Size:	Source: Mouse	Clonality: Monoclonal

**Application:** ELISA 1:10000, WB 1:500-1:2000  
 \*The optimal dilutions should be determined by the end user.

**Reactivity:** Human, Monkey

**Storage:** Mouse IgG1 in phosphate buffered saline (without Mg<sup>2+</sup> and Ca<sup>2+</sup>), pH 7.4, 150mM NaCl, 0.02% sodium azide and 50% glycerol. Store at -20 °C. Stable for 12 months from date of receipt.

**Purification:** Affinity-chromatography.

**Immunogen:** Purified recombinant fragment of human ABL1 expressed in E. Coli.

**Uniprot:** P00519/P42684

**Description:** The ABL1 protooncogene encodes a cytoplasmic and nuclear protein tyrosine kinase that has been implicated in processes of cell differentiation, cell division, cell adhesion, and stress response. Activity of c-Abl protein is negatively regulated by its SH3 domain, and deletion of the SH3 domain turns ABL1 into an oncogene. The t(9;22) translocation results in the head-to-tail fusion of the BCR (MIM:151410) and ABL1 genes present in many cases of chronic myelogenous leukemia. The DNA-binding activity of the ubiquitously expressed ABL1 tyrosine kinase is regulated by CDC2-mediated phosphorylation, suggesting a cell cycle function for ABL1.

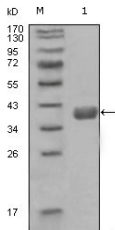


Figure 1: Western blot analysis using ABL1 mouse mAb against truncated GST-ABL1 recombinant protein (1).

**IMPORTANT:** For western blot, incubate membrane with diluted primary Ab in 5% w/v milk , 1X TBS, 0.1% Tween@20 at 4°C with gentle shaking, overnight.

For Research Use Only. Not for use in diagnostic and therapeutic procedures. Not for resale without express authorization.