

## Cytochrome P450 39A1 Ab

[Images\(2\)](#)

Cat.#: DF4761                                      Concn.: ~1mg/ml                                      Mol.Wt.: 54 KD  
Size:    Source: Rabbit    Clonality: Polyclonal

Application:                                      WB 1:500-1:1000, IHC 1:50-1:200, IF/ICC 1:100-1:500  
\*The optimal dilutions should be determined by the end user.

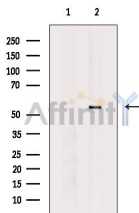
Reactivity:                                      Human,Mouse

Storage:                                      Rabbit IgG in phosphate buffered saline , pH 7.4, 150mM NaCl, 0.02% sodium azide and 50% glycerol. Store at -20 °C. Stable for 12 months from date of receipt.

Purification:                                      The antiserum was purified by peptide affinity chromatography using SulfoLink™ Coupling Resin (Thermo Fisher Scientific).

Immunogen:                                      A synthesized peptide derived from human Cytochrome P450 39A1, corresponding to a region within C-terminal amino acids.

Uniprot:                                      Q9NYL5



Western blot analysis of extracts from HeLa cells, using Cytochrome P450 39A1 Ab. The lane on the left was treated with blocking peptide.

**IMPORTANT:** For western blot, incubate membrane with diluted primary Ab in 5% w/v milk , 1X TBS, 0.1% Tween@20 at 4°C with gentle shaking, overnight.

For Research Use Only. Not for use in diagnostic and therapeutic procedures. Not for resale without express authorization.