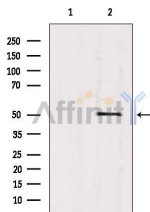


## VANGL1 Ab

[Images\(2\)](#)

|               |                 |                       |
|---------------|-----------------|-----------------------|
| Cat.#: DF4607 | Concn.: ~1mg/ml | Mol.Wt.: 50 KD        |
| Size:         | Source: Rabbit  | Clonality: Polyclonal |

|               |  |
|---------------|--|
| Application:  | WB 1:500-1:1000, IF/ICC 1:100-1:500<br>*The optimal dilutions should be determined by the end user.  |
| Reactivity:   | Human,Mouse  |
| Storage:      | Rabbit IgG in phosphate buffered saline , pH 7.4, 150mM NaCl, 0.02% sodium azide and 50% glycerol. Store at -20 °C. Stable for 12 months from date of receipt. |
| Purification: | The antiserum was purified by peptide affinity chromatography using SulfoLink™ Coupling Resin (Thermo Fisher Scientific).                                      |
| Immunogen:    | A synthesized peptide derived from human VANGL1, corresponding to a region within the internal amino acids.  |
| Uniprot:      | Q8TAA9   |



Western blot analysis of extracts from 293, using VANGL1 Ab. Lane 1 was treated with the blocking peptide.

**IMPORTANT:** For western blot, incubate membrane with diluted primary Ab in 5% w/v milk , 1X TBS, 0.1% Tween@20 at 4°C with gentle shaking, overnight.

For Research Use Only. Not for use in diagnostic and therapeutic procedures. Not for resale without express authorization.