

## TIGD1 Ab

[Images\(1\)](#)

<b>Cat.#:</b> DF4566	<b>Concn.:</b> ~1mg/ml	<b>Mol.Wt.:</b> 67 KD
<b>Size:</b>	<b>Source:</b> Rabbit	<b>Clonality:</b> Polyclonal

**Application:** WB 1:500-1:1000, IF/ICC 1:100-1:500  
\*The optimal dilutions should be determined by the end user.

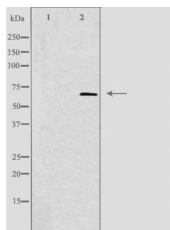
**Reactivity:** Human

**Storage:** Rabbit IgG in phosphate buffered saline , pH 7.4, 150mM NaCl, 0.02% sodium azide and 50% glycerol. Store at -20 °C. Stable for 12 months from date of receipt.

**Purification:** The antiserum was purified by peptide affinity chromatography using SulfoLink™ Coupling Resin (Thermo Fisher Scientific).

**Immunogen:** A synthesized peptide derived from human TIGD1, corresponding to a region within the internal amino acids.

**Uniprot:** Q96MW7



Western blot analysis of extracts from 293 cells, using TIGD1 Ab. The lane on the left was treated with the antigen-specific peptide.

**IMPORTANT:** For western blot, incubate membrane with diluted primary Ab in 5% w/v milk , 1X TBS, 0.1% Tween@20 at 4°C with gentle shaking, overnight.

For Research Use Only. Not for use in diagnostic and therapeutic procedures. Not for resale without express authorization.