

## Calnexin Ab

[Images\(2\)](#)

Cat.#: BF0515                      Concn.: ~1mg/ml                      Mol.Wt.: 90kDa  
Size:                                      Source: Mouse                      Clonality: Monoclonal

Application:                      ELISA 1:10000, WB 1:500-1:2000, IF/ICC 1:200-1:1000  
\*The optimal dilutions should be determined by the end user.

Reactivity:                      Human

Storage:                      Mouse IgG1 in phosphate buffered saline (without Mg<sup>2+</sup> and Ca<sup>2+</sup>), pH 7.4, 150mM NaCl, 0.02% sodium azide and 50% glycerol. Store at -20 °C. Stable for 12 months from date of receipt.

Purification:                      Affinity-chromatography.

Immunogen:                      Purified recombinant fragment of human Calnexin expressed in E. Coli.

Uniprot:                      P27824

Description:                      This gene encodes a member of the calnexin family of molecular chaperones. The encoded protein is a calcium-binding, endoplasmic reticulum (ER)-associated protein that interacts transiently with newly synthesized N-linked glycoproteins, facilitating protein folding and assembly. It may also play a central role in the quality control of protein folding by retaining incorrectly folded protein subunits within the ER for degradation. Alternatively spliced transcript variants encoding the same protein have been described.

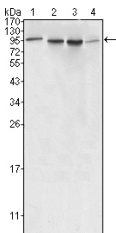


Figure 1: Western blot analysis using Calnexin mouse mAb against A431 (1), HeLa (2), MCF-7 (3) and A549 (4) cell lysate.

**IMPORTANT:** For western blot, incubate membrane with diluted primary Ab in 5% w/v milk, 1X TBS, 0.1% Tween@20 at 4°C with gentle shaking, overnight.

For Research Use Only. Not for use in diagnostic and therapeutic procedures. Not for resale without express authorization.