

## PBEF1 Ab

[Images\(1\)](#)

|               |                 |                       |
|---------------|-----------------|-----------------------|
| Cat.#: BF0389 | Concn.: ~1mg/ml | Mol.Wt.: 56kDa        |
| Size:         | Source: Mouse   | Clonality: Monoclonal |

|               |   |
|---------------|---|
| Application:  | ELISA 1:10000, WB 1:500-1:2000<br>*The optimal dilutions should be determined by the end user.  |
| Reactivity:   | Human   |
| Storage:      | Mouse IgG1 in phosphate buffered saline (without Mg <sup>2+</sup> and Ca <sup>2+</sup> ), pH 7.4, 150mM NaCl, 0.02% sodium azide and 50% glycerol. Store at -20 °C. Stable for 12 months from date of receipt.  |
| Purification: | Affinity-chromatography.  |
| Immunogen:    | Purified recombinant fragment of human PBEF1 expressed in E. Coli.  |
| Uniprot:      | P43490  |
| Description:  | PBEF1: nicotinamide phosphoribosyltransferase. This gene encodes a protein that catalyzes the condensation of nicotinamide with 5-phosphoribosyl-1-pyrophosphate to yield nicotinamide mononucleotide, one step in the biosynthesis of nicotinamide adenine dinucleotide. The protein is an adipokine that is localized to the bloodstream and has various functions, including the promotion of vascular smooth muscle cell maturation and inhibition of neutrophil apoptosis. It also activates insulin receptor and has insulin-mimetic effects, lowering blood glucose and improving insulin sensitivity. The protein is highly expressed in visceral fat and serum levels of the protein correlate with obesity. |

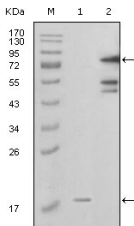


Figure 1: Western blot analysis using PBEF1 mouse mAb against truncated PBEF1-His recombinant protein (1) and full-length GFP-PBEF1(aa1-491) transfected COS7 cell lysates (2).

**IMPORTANT:** For western blot, incubate membrane with diluted primary Ab in 5% w/v milk, 1X TBS, 0.1% Tween@20 at 4°C with gentle shaking, overnight.

For Research Use Only. Not for use in diagnostic and therapeutic procedures. Not for resale without express authorization.