

# YES1 Ab

[Images\(1\)](#)

Cat.#: BF0263                                      Concn.: ~1mg/ml                                      Mol.Wt.: 61kDa  
 Size:    Source: Mouse    Clonality: Monoclonal

Application:                                      ELISA 1:10000, WB 1:500-1:2000  
 \*The optimal dilutions should be determined by the end user.  
 Reactivity:    Human  
 Storage:    Mouse IgG1 in phosphate buffered saline (without Mg<sup>2+</sup> and Ca<sup>2+</sup>), pH 7.4, 150mM NaCl, 0.02% sodium azide and 50% glycerol. Store at -20 °C. Stable for 12 months from date of receipt.  
 Purification:    Affinity-chromatography.  
 Immunogen:    Purified recombinant fragment of human YES1 expressed in E. Coli.  
 Uniprot:    P07947  
 Description:    This gene is the cellular homolog of the Yamaguchi sarcoma virus oncogene. The encoded protein has tyrosine kinase activity and belongs to the src family of proteins. This gene lies in close proximity to thymidylate synthase gene on chromosome 18, and a corresponding pseudogene has been found on chromosome 22.

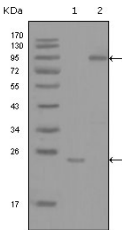


Figure 1: Western blot analysis using YES1 mouse mAb against truncated YES1-His recombinant protein (1) and full-length GFP-YES1(aa1-543) transfected COS7 cell lysates (2).

**IMPORTANT:** For western blot, incubate membrane with diluted primary Ab in 5% w/v milk , 1X TBS, 0.1% Tween@20 at 4°C with gentle shaking, overnight.

For Research Use Only. Not for use in diagnostic and therapeutic procedures. Not for resale without express authorization.