

## MLL Ab

[Images\(1\)](#)

Cat.#: BF0421	Concn.: ~1mg/ml	Mol.Wt.: 180kDa
Size:	Source: Mouse	Clonality: Monoclonal
Application:	ELISA 1:10000, WB 1:500-1:2000, IHC 1:200-1:1000 *The optimal dilutions should be determined by the end user.	
Reactivity:	Human	
Storage:	Mouse IgG1 in phosphate buffered saline (without Mg <sup>2+</sup> and Ca <sup>2+</sup> ), pH 7.4, 150mM NaCl, 0.02% sodium azide and 50% glycerol. Store at -20 °C. Stable for 12 months from date of receipt.	
Purification:	Affinity-chromatography.	
Immunogen:	Purified recombinant fragment of human MLL expressed in E. Coli.	
Uniprot:	Q03164	
Description:	<p>Myeloid/lymphoid or mixed-lineage leukemia (trithorax homolog, Drosophila). Eukaryotic RNA polymerase II mediates the synthesis of mature and functional messenger RNA. This is a multistep process, called the transcription cycle, that includes five stages: preinitiation, promoter, clearance, elongation and termination. Elongation is thought to be a critical stage for the regulation of gene expression. ELL (11-19 lysine-rich leukemia protein, also designated MEN) functions as an RNA polymerase II elongation factor that increases the rate of transcription by suppressing transient pausing by RNA polymerase II. Also, ELL is thought to regulate cellular proliferation.</p>	

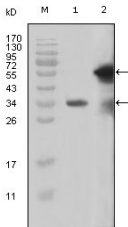


Figure 1: Western blot analysis using MLL mouse mAb against truncated MLL recombinant protein (1) and truncated GFP-MLL(aa3714-3969) transfected Cos7 cell lysates (2).

**IMPORTANT:** For western blot, incubate membrane with diluted primary Ab in 5% w/v milk, 1X TBS, 0.1% Tween@20 at 4°C with gentle shaking, overnight.

For Research Use Only. Not for use in diagnostic and therapeutic procedures. Not for resale without express authorization.