

FER Ab

[Images\(1\)](#)

Cat.#: BF0076 Concn.: ~1mg/ml Mol.Wt.: 95kDa
Size: Source: Mouse Clonality: Monoclonal

Application: ELISA 1:10000, WB 1:500-1:2000, IHC 1:200-1:1000, IF/ICC
1:200-1:1000

*The optimal dilutions should be determined by the end user.

Reactivity: Human,Mouse

Storage: Mouse IgG1 in phosphate buffered saline (without Mg²⁺ and Ca²⁺), pH
7.4, 150mM NaCl, 0.02% sodium azide and 50% glycerol. Store at -20 °C.
Stable for 12 months from date of receipt.

Purification: Affinity-chromatography.

Immunogen: Purified recombinant fragment of human FER expressed in E. Coli.

Uniprot: P16591

Description: Fer protein is a member of the FPS/FES family of nontransmembrane
receptor tyrosine kinases. It regulates cell-cell adhesion and mediates
signaling from the cell surface to the cytoskeleton via growth factor
receptors.

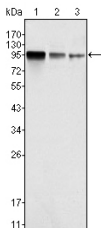


Figure 1: Western blot analysis using FER mouse mAb against NIH/3T3 (1), A549 (2) and SK-MEL-5 (3) cell lysate.

IMPORTANT: For western blot, incubate membrane with diluted primary Ab in 5% w/v milk , 1X TBS, 0.1% Tween@20 at 4°C with gentle shaking, overnight.

For Research Use Only. Not for use in diagnostic and therapeutic procedures. Not for resale without express authorization.