

## RAB11FIP2 Ab

[Images\(1\)](#)

Cat.#: DF4370                      Concn.: ~1mg/ml                      Mol.Wt.: 58 KD  
Size:                                      Source: Rabbit                              Clonality: Polyclonal

Application:                              WB 1:500-1:1000, IF/ICC 1:100-1:500

\*The optimal dilutions should be determined by the end user.

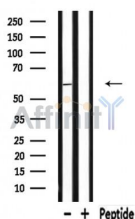
Reactivity:                              Human,Mouse,Rat

Storage:                                  Rabbit IgG in phosphate buffered saline , pH 7.4, 150mM NaCl, 0.02% sodium azide and 50% glycerol. Store at -20 °C. Stable for 12 months from date of receipt.

Purification:                              The antiserum was purified by peptide affinity chromatography using SulfoLink™ Coupling Resin (Thermo Fisher Scientific).

Immunogen:                              A synthesized peptide derived from human RAB11FIP2, corresponding to a region within the internal amino acids.

Uniprot:                                      Q7L804



Western blot analysis of extracts from Rat brain lysates, using RAB11FIP2 Ab.

**IMPORTANT:** For western blot, incubate membrane with diluted primary Ab in 5% w/v milk , 1X TBS, 0.1% Tween@20 at 4°C with gentle shaking, overnight.

For Research Use Only. Not for use in diagnostic and therapeutic procedures. Not for resale without express authorization.