

IGF1R-Beta Ab

[Images\(1\)](#)

Cat.#: BF0234	Concn.: ~1mg/ml	Mol.Wt.: 96kDa
Size:	Source: Mouse	Clonality: Monoclonal

Application:	ELISA 1:10000, WB 1:500-1:2000, IHC 1:200-1:1000 *The optimal dilutions should be determined by the end user.
Reactivity:	Human
Storage:	Mouse IgG1 in phosphate buffered saline (without Mg ²⁺ and Ca ²⁺), pH 7.4, 150mM NaCl, 0.02% sodium azide and 50% glycerol. Store at -20 °C. Stable for 12 months from date of receipt.
Purification:	Affinity-chromatography.
Immunogen:	Purified recombinant fragment of human IGF1R-Beta expressed in E. Coli.
Uniprot:	P08069
Description:	IGF1R (insulin-like growth factor 1 receptor), a transmembrane receptor tyrosine kinase, is widely expressed in many cell types within fetal and postnatal tissues, and in many cell lines. Upon binding to its ligands, IGF-I and IGF-II, receptor autophosphorylation occurs. The triple tyrosine cluster within the kinase domain (Tyr1131, Tyr1135 and Tyr1136) is the earliest major site of autophosphorylation.

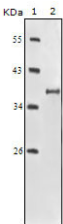


Figure 1: Western blot analysis using IGF1R-Beta mouse mAb against truncated IGF1R-Beta recombinant protein.

IMPORTANT: For western blot, incubate membrane with diluted primary Ab in 5% w/v milk, 1X TBS, 0.1% Tween@20 at 4°C with gentle shaking, overnight.

For Research Use Only. Not for use in diagnostic and therapeutic procedures. Not for resale without express authorization.