

## RSK1 Ab

[Images\(1\)](#)

Cat.#: BF0171	Concn.: ~1mg/ml	Mol.Wt.: 90kDa
Size:	Source: Mouse	Clonality: Monoclonal

Application: ELISA 1:10000, WB 1:500-1:2000, IHC 1:200-1:1000  
\*The optimal dilutions should be determined by the end user.

Reactivity: Human

Storage: Mouse IgG1 in phosphate buffered saline (without Mg<sup>2+</sup> and Ca<sup>2+</sup>), pH 7.4, 150mM NaCl, 0.02% sodium azide and 50% glycerol. Store at -20 °C. Stable for 12 months from date of receipt.

Purification: Affinity-chromatography.

Immunogen: Purified recombinant fragment of human RSK1 expressed in E. Coli.

Uniprot: Q15418

Description: Rsk1 is a member of a family of 90kDa ribosomal protein S6 kinases, which includes Rsk1, Rsk2 and Rsk3. These are broadly expressed serine / threonine protein kinases activated in response to mitogenic stimuli, including extracellular signal regulated protein kinases Erk1 and Erk2. Rsk1 is activated by MAPK in vitro and in vivo via phosphorylation. Active Rsk1 appear to play a major role in transcriptional regulation by translocating to the nucleus and phosphorylating c-Fos and CREB. RSK proteins possess two separate kinase domains, the C terminal kinase domain and the N terminal kinase domain, separated by a linker region containing a hydrophobic motif. RSK is activated by many stimuli including growth factors, phorbol esters, cAMP, heat shock, and irradiation.

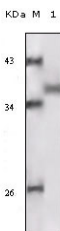


Figure 1: Western blot analysis using RSK1 mouse mAb against truncated RSK1 recombinant protein.

**IMPORTANT:** For western blot, incubate membrane with diluted primary Ab in 5% w/v milk , 1X TBS, 0.1% Tween@20 at 4°C with gentle shaking, overnight.

For Research Use Only. Not for use in diagnostic and therapeutic procedures. Not for resale without express authorization.