

# MINPP1 Ab

[Images\(1\)](#)

Cat.#: DF4189                      Concn.: ~1mg/ml                      Mol.Wt.: 60 KD  
 Size:                                      Source: Rabbit                          Clonality: Polyclonal

Application:                              WB 1:500-1:1000, IF/ICC 1:100-1:500  
   \*The optimal dilutions should be determined by the end user.

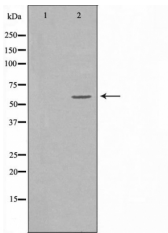
Reactivity:                                Human,Mouse,Rat

Storage:                                    Rabbit IgG in phosphate buffered saline , pH 7.4, 150mM NaCl, 0.02% sodium azide and 50% glycerol. Store at -20 °C. Stable for 12 months from date of receipt.

Purification:                              The antiserum was purified by peptide affinity chromatography using SulfoLink™ Coupling Resin (Thermo Fisher Scientific).

Immunogen:                                A synthesized peptide derived from human MINPP1, corresponding to a region within the internal amino acids.

Uniprot:                                     Q9UNW1



Western blot analysis of extracts from 293 cells, using MINPP1 Ab.,The lane on the left was treated with the antigen-specific peptide.

**IMPORTANT:** For western blot, incubate membrane with diluted primary Ab in 5% w/v milk , 1X TBS, 0.1% Tween@20 at 4°C with gentle shaking, overnight.

For Research Use Only. Not for use in diagnostic and therapeutic procedures. Not for resale without express authorization.