

GRB2 Ab

[Images\(3\)](#)

Cat.#: DF4092	Concn.: ~1mg/ml	Mol.Wt.: 32 KD
Size:	Source: Rabbit	Clonality: Polyclonal

Application: IHC 1:50-1:200, WB 1:500-1:1000, IF/ICC 1:100-1:500
*The optimal dilutions should be determined by the end user.

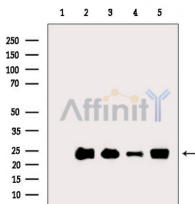
Reactivity: Human, Mouse, Rat

Storage: Rabbit IgG in phosphate buffered saline , pH 7.4, 150mM NaCl, 0.02% sodium azide and 50% glycerol. Store at -20 °C. Stable for 12 months from date of receipt.

Purification: The antiserum was purified by peptide affinity chromatography using SulfoLink™ Coupling Resin (Thermo Fisher Scientific).

Immunogen: A synthesized peptide derived from human GRB2, corresponding to a region within C-terminal amino acids.

Uniprot: P62993



Western blot analysis of extracts from various samples, using GRB2 Ab.

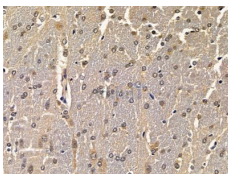
Lane 1: Rat liver, blocked with antigen-specific peptides.

Lane 2: Rat liver.

Lane 3: Mouse brain.

Lane 4: Hepg2 cells(heat-shock treatment).

Lane 5: Hela cells(heat-shock treatment).



DF4092 at 1/100 staining rat brain tissue by IHC-P. The sample was formaldehyde fixed and a heat mediated antigen retrieval step in citrate buffer was performed. The sample was then blocked and incubated with the primary Ab at 4°C overnight. An HRP conjugated anti-rabbit Ab was used as the secondary Ab.

IMPORTANT: For western blot, incubate membrane with diluted primary Ab in 5% w/v milk , 1X TBS, 0.1% Tween@20 at 4°C with gentle shaking, overnight.

For Research Use Only. Not for use in diagnostic and therapeutic procedures. Not for resale without express authorization.