

## GLRB Ab

[Images\(3\)](#)

Cat.#: DF4088                      Concn.: ~1mg/ml                      Mol.Wt.: 56 KD  
Size:                                      Source: Rabbit                              Clonality: Polyclonal

Application:                      IHC 1:50-1:200, WB 1:500-1:1000, IF/ICC 1:100-1:500  
\*The optimal dilutions should be determined by the end user.

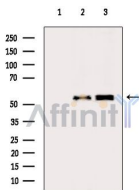
Reactivity:                              Human,Mouse,Rat

Storage:                              Rabbit IgG in phosphate buffered saline , pH 7.4, 150mM NaCl, 0.02% sodium azide and 50% glycerol. Store at -20 °C. Stable for 12 months from date of receipt.

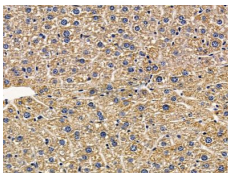
Purification:                              The antiserum was purified by peptide affinity chromatography using SulfoLink™ Coupling Resin (Thermo Fisher Scientific).

Immunogen:                              A synthesized peptide derived from human GLRB, corresponding to a region within the internal amino acids.

Uniprot:                                      P48167



Western blot analysis of extracts from various samples, using GLRB Ab.  
Lane 1: Hepg2 cells(heat-shock treatment), blocked with antigen-specific peptides.  
Lane 2: Hepg2 cells(heat-shock treatment).  
Lane 3: Hela cells(heat-shock treatment).



DF4088 at 1/100 staining mouse liver tissue by IHC-P. The sample was formaldehyde fixed and a heat mediated antigen retrieval step in citrate buffer was performed. The sample was then blocked and incubated with the primary Ab at 4°C overnight. An HRP conjugated anti-rabbit Ab was used as the secondary Ab.

**IMPORTANT:** For western blot, incubate membrane with diluted primary Ab in 5% w/v milk , 1X TBS, 0.1% Tween@20 at 4°C with gentle shaking, overnight.

For Research Use Only. Not for use in diagnostic and therapeutic procedures. Not for resale without express authorization.