

## NDUFB9 Ab

[Images\(1\)](#)

Cat.#: DF4208                      Concn.: ~1mg/ml                      Mol.Wt.: 22 KD  
Size:                                      Source: Rabbit                          Clonality: Polyclonal

Application:                              WB 1:500-1:1000, IF/ICC 1:100-1:500  
\*The optimal dilutions should be determined by the end user.

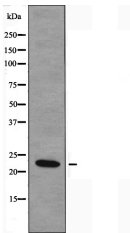
Reactivity:                                Human

Storage:                                   Rabbit IgG in phosphate buffered saline , pH 7.4, 150mM NaCl, 0.02% sodium azide and 50% glycerol. Store at -20 °C. Stable for 12 months from date of receipt.

Purification:                              The antiserum was purified by peptide affinity chromatography using SulfoLink™ Coupling Resin (Thermo Fisher Scientific).

Immunogen:                                A synthesized peptide derived from human NDUFB9, corresponding to a region within the internal amino acids.

Uniprot:                                    Q9Y6M9



Western blot analysis of extracts from COLO cells using NDUFB9 Ab.

**IMPORTANT:** For western blot, incubate membrane with diluted primary Ab in 5% w/v milk , 1X TBS, 0.1% Tween@20 at 4°C with gentle shaking, overnight.

For Research Use Only. Not for use in diagnostic and therapeutic procedures. Not for resale without express authorization.