

# Lck Ab

[Images\(1\)](#)

Cat.#: BF0456	Concn.: ~1mg/ml	Mol.Wt.: 56kDa
Size:	Source: Mouse	Clonality: Monoclonal

**Application:** ELISA 1:10000, WB 1:500-1:2000  
 \*The optimal dilutions should be determined by the end user.

**Reactivity:** Human

**Storage:** Mouse IgG1 in phosphate buffered saline (without Mg<sup>2+</sup> and Ca<sup>2+</sup>), pH 7.4, 150mM NaCl, 0.02% sodium azide and 50% glycerol. Store at -20 °C. Stable for 12 months from date of receipt.

**Purification:** Affinity-chromatography.

**Immunogen:** Purified recombinant fragment of human Lck expressed in E. Coli.

**Uniprot:** P06239

**Description:** Tyrosine kinase that plays an essential role for the selection and maturation of developing t-cell in the thymus and in mature t-cell function. is constitutively associated with the cytoplasmic portions of the cd4 and cd8 surface receptors and plays a key role in t-cell antigen receptor(tcr)-linked signal transduction pathways. association of the tcr with a peptide antigen-bound mhc complex facilitates the interaction of cd4 and cd8 with mhc class ii and class i molecules, respectively, and thereby recruits the associated lck to the vicinity of the tcr/cd3 complex. lck then phosphorylates tyrosines residues within the immunoreceptor tyrosines-based activation motifs (itams) in the cytoplasmic tails of the tcrgamma chains and cd3 subunits, initiating the tcr/cd3 signaling pathway.

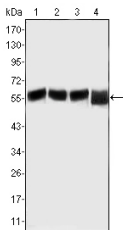


Figure 1: Western blot analysis using LCK mouse mAb against MOLT-4 (1), CCRF-CEM (2), CCRF-HSB-2 (3) and Jurkat (4) cell lysate

**IMPORTANT:** For western blot, incubate membrane with diluted primary Ab in 5% w/v milk , 1X TBS, 0.1% Tween@20 at 4°C with gentle shaking, overnight.

For Research Use Only. Not for use in diagnostic and therapeutic procedures. Not for resale without express authorization.