

Estrogen Receptor-alpha Ab

[Images\(2\)](#)

Cat.#: BF0111	Concn.: ~1mg/ml	Mol.Wt.: 68kDa
Size:	Source: Mouse	Clonality: Monoclonal

Application: ELISA 1:10000, WB 1:500-1:2000, IHC 1:200-1:1000
 *The optimal dilutions should be determined by the end user.

Reactivity: Human

Storage: Mouse IgG1 in phosphate buffered saline (without Mg²⁺ and Ca²⁺), pH 7.4, 150mM NaCl, 0.02% sodium azide and 50% glycerol. Store at -20 °C. Stable for 12 months from date of receipt.

Purification: Affinity-chromatography.

Immunogen: Purified recombinant fragment of human ER-alpha expressed in E. Coli.

Uniprot: P03372

Description: The estrogen receptor (ER) is a ligand-activated transcription factor composed of several domains important for hormone binding, DNA binding, and activation of transcription. Alternative splicing results in several ER mRNA transcripts, which differ primarily in their 5-prime untranslated regions. Two isoforms of the human ER, ERA and ER-beta, occur, each with distinct tissue and cell patterns of expression. Pelletier and El-Alfy studied the immunocytochemical localization of ESRA and ESRB in human reproductive tissues. In the ovary, ERB immunoreactivity was found in nuclei of granulosa cells of growing follicles at all stages from primary to mature follicles, interstitial gland, and germinal epithelium cells.

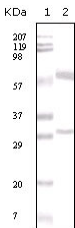
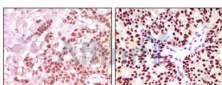


Figure 1: Western blot analysis using ER-alpha mouse mAb against human breast carcinoma tissue lysate.



Immunohistochemical analysis of paraffin-embedded human breast carcinoma, using ER-alpha mouse mAb showing nuclear expression with DAB staining.

IMPORTANT: For western blot, incubate membrane with diluted primary Ab in 5% w/v milk , 1X TBS, 0.1% Tween@20 at 4°C with gentle shaking, overnight.

For Research Use Only. Not for use in diagnostic and therapeutic procedures. Not for resale without express authorization.