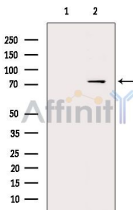


## RAD17 Ab

[Images\(3\)](#)

Cat.#: AF0110	Concn.: ~1mg/ml	Mol.Wt.: 77kDa
Size:	Source: Rabbit	Clonality: Polyclonal
Application:	WB 1:500-1:3000, IF/ICC 1:100-1:500 *The optimal dilutions should be determined by the end user.	
Reactivity:	Human,Mouse,Rat	
Storage:	Rabbit IgG in phosphate buffered saline , pH 7.4, 150mM NaCl, 0.02% sodium azide and 50% glycerol. Store at -20 °C. Stable for 12 months from date of receipt.	
Purification:	The antiserum was purified by peptide affinity chromatography using SulfoLink™ Coupling Resin (Thermo Fisher Scientific).	
Immunogen:	A synthesized peptide derived from human RAD17, corresponding to a region within C-terminal amino acids.	
Uniprot:	O75943	
Description:	Rad17 a cell cycle checkpoint gene required for cell cycle arrest and DNA damage repair in response to DNA damage. Shares strong similarity with DNA replication factor C (RFC), and can form a complex with RFCs. Binds to chromatin prior to DNA damage and is phosphorylated by ATR after the damage. Phosphorylated and activated after DNA damage, inducing cell cycle G2 arrest. Eight alternatively spliced variants have been reported.	



Western blot analysis of extracts from HeLa cells(LPS 4h treatment), using RAD17 Ab. The lane on the left was treated with blocking peptide.

**IMPORTANT:** For western blot, incubate membrane with diluted primary Ab in 5% w/v milk , 1X TBS, 0.1% Tween@20 at 4°C with gentle shaking, overnight.

For Research Use Only. Not for use in diagnostic and therapeutic procedures. Not for resale without express authorization.