

## IL-1a Ab

[Images\(1\)](#)

Cat.#: BF0521                      Concn.: ~1mg/ml                      Mol.Wt.: 17/31kDa.  
Size:                                      Source: Mouse                      Clonality: Monoclonal

Application:                      ELISA 1:10000, WB 1:500-1:2000  
\*The optimal dilutions should be determined by the end user.

Reactivity:                      Human

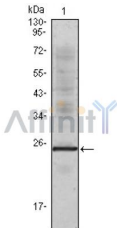
Storage:                      Mouse IgG1 in phosphate buffered saline (without Mg<sup>2+</sup> and Ca<sup>2+</sup>), pH 7.4, 150mM NaCl, 0.02% sodium azide and 50% glycerol. Store at -20 °C. Stable for 12 months from date of receipt.

Purification:                      Affinity-chromatography.

Immunogen:                      Purified recombinant fragment of human IL-1a expressed in E. Coli.

Uniprot:                      P01583

Description:                      Interleukin-1alpha is a member of the interleukin 1 cytokine family. It is a pleiotropic cytokine involved in various immune responses, inflammatory processes, and hematopoiesis. This cytokine is produced by monocytes and macrophages as a proprotein, which is proteolytically processed and released in response to cell injury, and thus induces apoptosis. IL-1 alpha and eight other interleukin 1 family genes form a cytokine gene cluster on chromosome 2. It has been suggested that the polymorphism of these genes is associated with rheumatoid arthritis and Alzheimer's disease



Western blot analysis using IL1a mouse mAb against truncated IL1a recombinant protein.

**IMPORTANT:** For western blot, incubate membrane with diluted primary Ab in 5% w/v milk , 1X TBS, 0.1% Tween@20 at 4°C with gentle shaking, overnight.

For Research Use Only. Not for use in diagnostic and therapeutic procedures. Not for resale without express authorization.