

Nucleophosmin Ab

[Images\(1\)](#)

Cat.#: BF0427 Concn.: ~1mg/ml Mol.Wt.: 33kDa
Size: Source: Mouse Clonality: Monoclonal

Application: ELISA 1:10000, WB 1:500-1:2000, IHC 1:200-1:1000, IF/ICC
1:200-1:1000

*The optimal dilutions should be determined by the end user.

Reactivity: Human,Monkey

Storage: Mouse IgG1 in phosphate buffered saline (without Mg²⁺ and Ca²⁺), pH
7.4, 150mM NaCl, 0.02% sodium azide and 50% glycerol. Store at -20 °C.
Stable for 12 months from date of receipt.

Purification: Affinity-chromatography.

Immunogen: Purified recombinant fragment of human Nucleophosmin expressed in E.
Coli.

Uniprot: P06748

Description: Nucleophosmin (NPM), also named B23 or NO38, is a major nucleolar
protein which is 20 times more abundant in tumor or proliferating cells than
in normal resting cells. NPM has been implicated in several distinct cellular
functions, including assembly and transport of ribosomes,
cytoplasmic/nuclear trafficking, regulation of DNA polymerase alpha
activity, centrosome duplication and molecular chaperoning activities. The
NPM is also known for its fusion with the anaplastic lymphoma kinase
(ALK) receptor tyrosine kinase. The NPM portion contributes to
transformation by providing a dimerization domain, which results in
activation of the fused kinase.

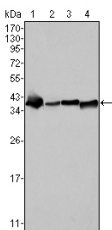


Figure 1: Western blot analysis using NPM mouse mAb against SMMC-7721 (1), HepG2 (2), HeLa (3) and HEK293 (4) cell lysate.

IMPORTANT: For western blot, incubate membrane with diluted primary Ab in 5% w/v milk , 1X TBS, 0.1% Tween@20 at 4°C with gentle shaking, overnight.