

ACSS1 Ab

[References\(3\)](#) [Images\(4\)](#)

Cat.#: DF3727 Concn.: ~1mg/ml Mol.Wt.: 75 KD
Size: Source: Rabbit Clonality: Polyclonal

Application: WB 1:500-1:1000, IHC 1:50-1:200, IF/ICC 1:100-1:500
*The optimal dilutions should be determined by the end user.

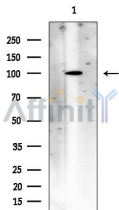
Reactivity: Human,Mouse

Storage: Rabbit IgG in phosphate buffered saline , pH 7.4, 150mM NaCl, 0.02% sodium azide and 50% glycerol. Store at -20 °C. Stable for 12 months from date of receipt.

Purification: The antiserum was purified by peptide affinity chromatography using SulfoLink™ Coupling Resin (Thermo Fisher Scientific).

Immunogen: A synthesized peptide derived from human ACSS1, corresponding to a region within C-terminal amino acids.

Uniprot: Q9NUB1



Western blot analysis of extracts from COLO205 cells(heat-shock treatment), using ACSS1 Ab at 1/1000 dilution.
Observed bands:100kD.

IMPORTANT: For western blot, incubate membrane with diluted primary Ab in 5% w/v milk , 1X TBS, 0.1% Tween@20 at 4°C with gentle shaking, overnight.

For Research Use Only. Not for use in diagnostic and therapeutic procedures. Not for resale without express authorization.