

## NR4A3 Ab

[Images\(1\)](#)

Cat.#: AF0389                      Concn.: ~1mg/ml                      Mol.Wt.: 65kDa  
Size:                                      Source: Rabbit                              Clonality: Polyclonal

Application:                      WB 1:500-1:3000, IF/ICC 1:100-1:500  
\*The optimal dilutions should be determined by the end user.

Reactivity:                      Human,Mouse,Rat,Monkey

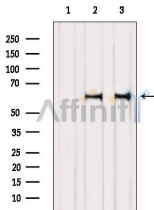
Storage:                              Rabbit IgG in phosphate buffered saline , pH 7.4, 150mM NaCl, 0.02% sodium azide and 50% glycerol. Store at -20 °C. Stable for 12 months from date of receipt.

Purification:                      The antiserum was purified by peptide affinity chromatography using SulfoLink™ Coupling Resin (Thermo Fisher Scientific).

Immunogen:                      A synthesized peptide derived from human NR4A3, corresponding to a region within the internal amino acids.

Uniprot:                              Q92570

Description:                      NR4A3 Binds to the B1A response-element. Belongs to the nuclear hormone receptor family, NR4 subfamily. 3 isoforms of the human protein are produced by alternative splicing.



Western blot analysis of extracts from various samples, using NR4A3 Ab.  
Lane 1: HeLa, treated with blocking peptide;  
Lane 2: HeLa;  
Lane 3: COS-7.

**IMPORTANT:** For western blot, incubate membrane with diluted primary Ab in 5% w/v milk , 1X TBS, 0.1% Tween@20 at 4°C with gentle shaking, overnight.

For Research Use Only. Not for use in diagnostic and therapeutic procedures. Not for resale without express authorization.