

MAN1B1 Ab

[Images\(1\)](#)

| | | |
|---------------|-----------------|-----------------------|
| Cat.#: AF0386 | Concn.: ~1mg/ml | Mol.Wt.: 80kDa |
| Size: | Source: Rabbit | Clonality: Polyclonal |

Application: WB 1:500-1:3000, IF/ICC 1:100-1:500
 *The optimal dilutions should be determined by the end user.

Reactivity: Human,Mouse,Rat

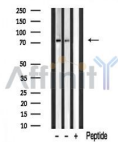
Storage: Rabbit IgG in phosphate buffered saline , pH 7.4, 150mM NaCl, 0.02% sodium azide and 50% glycerol. Store at -20 °C. Stable for 12 months from date of receipt.

Purification: The antiserum was purified by peptide affinity chromatography using SulfoLink™ Coupling Resin (Thermo Fisher Scientific).

Immunogen: A synthesized peptide derived from human MAN1B1, corresponding to a region within the internal amino acids.

Uniprot: Q9UKM7

Description: MAN1B1 Involved in glycoprotein quality control targeting of misfolded glycoproteins for degradation. It primarily trims a single alpha-1,2-linked mannose residue from ManGlcNAc to produce ManGlcNAc, but at high enzyme concentrations, as found in the ER quality control compartment (ERQC)



Western blot analysis of extracts from various samples, using MAN1B1 Ab.
 Lane 1: Rat brain lysates;
 Lane 2: Mouse brain lysates;
 Lane 3: Mouse brain lysates treated with blocking peptide;

IMPORTANT: For western blot, incubate membrane with diluted primary Ab in 5% w/v milk , 1X TBS, 0.1% Tween@20 at 4°C with gentle shaking, overnight.

For Research Use Only. Not for use in diagnostic and therapeutic procedures. Not for resale without express authorization.