

## PARK7 Ab

[Images\(5\)](#)

Cat.#: AF0380                      Concn.: ~1mg/ml                      Mol.Wt.: 20kDa,26kDa  
Size:                                      Source: Rabbit                      Clonality: Polyclonal

Application:                      WB 1:500-1:3000, IF/ICC 1:100-1:500  
\*The optimal dilutions should be determined by the end user.

Reactivity:                      Human,Mouse,Rat

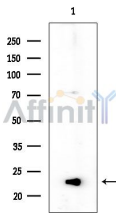
Storage:                              Rabbit IgG in phosphate buffered saline , pH 7.4, 150mM NaCl, 0.02% sodium azide and 50% glycerol. Store at -20 °C. Stable for 12 months from date of receipt.

Purification:                      The antiserum was purified by peptide affinity chromatography using SulfoLink™ Coupling Resin (Thermo Fisher Scientific).

Immunogen:                      A synthesized peptide derived from human PARK7, corresponding to a region within C-terminal amino acids.

Uniprot:                              Q99497

Description:                      DJ-1 associated with autosomal recessive early onset parkinsonism. Involved in the oxidative stress response. Three cysteines in DJ-1 may be oxidized to cysteine sulphonic acid in the cellular response to H<sub>2</sub>O<sub>2</sub>. Loss of DJ-1 function may lead to neurodegeneration.



**IMPORTANT:** For western blot, incubate membrane with diluted primary Ab in 5% w/v milk , 1X TBS, 0.1% Tween@20 at 4°C with gentle shaking, overnight.

For Research Use Only. Not for use in diagnostic and therapeutic procedures. Not for resale without express authorization.