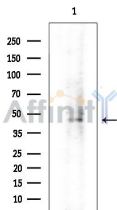


## Mnk1 Ab

[Images\(5\)](#)

Cat.#: AF0373	Concn.: ~1mg/ml	Mol.Wt.: 51kDa
Size:	Source: Rabbit	Clonality: Polyclonal
Application:	WB 1:500-1:3000, IF/ICC 1:100-1:500 *The optimal dilutions should be determined by the end user.	
Reactivity:	Human,Mouse	
Storage:	Rabbit IgG in phosphate buffered saline , pH 7.4, 150mM NaCl, 0.02% sodium azide and 50% glycerol. Store at -20 °C. Stable for 12 months from date of receipt.	
Purification:	The antiserum was purified by peptide affinity chromatography using SulfoLink™ Coupling Resin (Thermo Fisher Scientific).	
Immunogen:	A synthesized peptide derived from human Mnk1, corresponding to a region within the internal amino acids.	
Uniprot:	Q9BUB5	
Description:	Mnk1 a CAM kinase of the MAPKKAPK family that can regulate translation. Following activation by MAP kinases, Mnk1 phosphorylates eIF4E at Ser209, increasing its affinity for the 7-methylguanosine-containing mRNA cap. Two MAPK phosphorylation sites in mouse Mnk1 (Thr197 and Thr202) are essential for its kinase activity. Three alternatively spliced human isoforms have been described.	



Western blot analysis of extracts from COLO205 cells(heat-shock treatment), using Mnk1 Ab at 1/1000 dilution.  
Observed bands:45kD.

**IMPORTANT:** For western blot, incubate membrane with diluted primary Ab in 5% w/v milk , 1X TBS, 0.1% Tween@20 at 4°C with gentle shaking, overnight.

For Research Use Only. Not for use in diagnostic and therapeutic procedures. Not for resale without express authorization.