

## CADM4 Ab

[Images\(2\)](#)

Cat.#: DF3538                      Concn.: ~1mg/ml                      Mol.Wt.: 48 KD  
 Size:                                      Source: Rabbit                      Clonality: Polyclonal

Application:                      WB 1:500-1:1000, IHC 1:50-1:200, IF/ICC 1:100-1:500  
 \*The optimal dilutions should be determined by the end user.

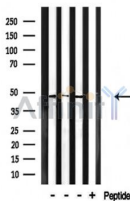
Reactivity:                      Human,Mouse,Rat

Storage:                      Rabbit IgG in phosphate buffered saline , pH 7.4, 150mM NaCl, 0.02% sodium azide and 50% glycerol. Store at -20 °C. Stable for 12 months from date of receipt.

Purification:                      The antiserum was purified by peptide affinity chromatography using SulfoLink™ Coupling Resin (Thermo Fisher Scientific).

Immunogen:                      A synthesized peptide derived from human CADM4, corresponding to a region within C-terminal amino acids.

Uniprot:                      Q8NFZ8



Western blot analysis of extracts from various samples, using CADM4 Ab.  
 Lane 1: Mouse muscle lysates;  
 Lane 2: Mouse lung lysates;  
 Lane 3: Rat brain lysates;  
 Lane 4: Rat brain lysates treated with blocking peptide;

**IMPORTANT:** For western blot, incubate membrane with diluted primary Ab in 5% w/v milk , 1X TBS, 0.1% Tween@20 at 4°C with gentle shaking, overnight.

For Research Use Only. Not for use in diagnostic and therapeutic procedures. Not for resale without express authorization.