

MBD3 Ab

[Images\(2\)](#)

Cat.#: AF0353	Concn.: ~1mg/ml	Mol.Wt.: 33kDa
Size:	Source: Rabbit	Clonality: Polyclonal

Application: WB 1:500-1:3000, IF/ICC 1:100-1:500
*The optimal dilutions should be determined by the end user.

Reactivity: Human, Mouse, Rat

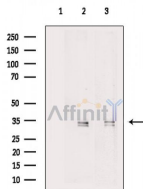
Storage: Rabbit IgG in phosphate buffered saline , pH 7.4, 150mM NaCl, 0.02% sodium azide and 50% glycerol. Store at -20 °C. Stable for 12 months from date of receipt.

Purification: The antiserum was purified by peptide affinity chromatography using SulfoLink™ Coupling Resin (Thermo Fisher Scientific).

Immunogen: A synthesized peptide derived from human MBD3, corresponding to a region within C-terminal amino acids.

Uniprot: O95983

Description: MBD3 methyl-CpG binding (MBD) proteins appear to bind differentially methylated domains (DMDs) of DNA, to recruit repression complexes, and to silence the locus. The methyl CpG binding domain of human MBD3 may not directly bind mCpG but does interact with the NuRD/Mi2 components HDAC1 and MTA2. Plays a role in histone deacetylation and nucleosome remodeling. Increased levels have been reported in lung cancer and glioblastomas and may be a therapeutic target.



Western blot analysis of extracts from various samples, using MBD3 Ab.
Lane 1: Mouse brain, blocked with antigen-specific peptides,
Lane 2: Mouse brain,
Lane 3: Rat brain.

IMPORTANT: For western blot, incubate membrane with diluted primary Ab in 5% w/v milk , 1X TBS, 0.1% Tween@20 at 4°C with gentle shaking, overnight.

For Research Use Only. Not for use in diagnostic and therapeutic procedures. Not for resale without express authorization.