

MCL-1 Ab

[Images\(1\)](#)

Cat.#: BF0080 Concn.: ~1mg/ml Mol.Wt.: 37kDa
Size: Source: Mouse Clonality: Monoclonal

Application: ELISA 1:10000, WB 1:500-1:2000, IHC 1:200-1:1000, IF/ICC
1:200-1:1000

*The optimal dilutions should be determined by the end user.

Reactivity: Human

Storage: Mouse IgG1 in phosphate buffered saline (without Mg²⁺ and Ca²⁺), pH
7.4, 150mM NaCl, 0.02% sodium azide and 50% glycerol. Store at -20 °C.
Stable for 12 months from date of receipt.

Purification: Affinity-chromatography.

Immunogen: Purified recombinant fragment of human MCL-1 expressed in E. Coli.

Uniprot: Q07820

Description: Mcl-1 (Myeloid cell leukemia-1) is Bcl-2-related and was identified as an
early-induction gene that increased in expression during the differentiation
of human myeloblastic leukemia cell ML-1, or exposure to different DNA
damaging agents. The level of Mcl-1 is decreased in peripheral B
lymphocytes undergoing apoptosis following treatment with apoptotic
stimuli such as TGF-alpha 1 and forskolin.

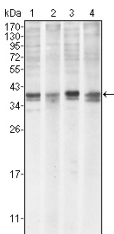


Figure 1: Western blot analysis using MCL1 mouse mAb against Hela (1), BCBL-1 (2), Jurkat (3) and HL60 (4) cell lysate.

IMPORTANT: For western blot, incubate membrane with diluted primary Ab in 5% w/v milk , 1X TBS, 0.1% Tween@20 at 4°C with gentle shaking, overnight.

For Research Use Only. Not for use in diagnostic and therapeutic procedures. Not for resale without express authorization.