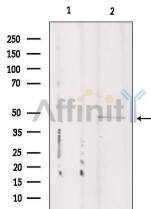


CSTF1 Ab

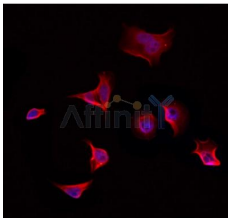
[Images\(3\)](#)

| | | |
|---------------|-----------------|-----------------------|
| Cat.#: DF3241 | Concn.: ~1mg/ml | Mol.Wt.: 48 KD |
| Size: | Source: Rabbit | Clonality: Polyclonal |

| | |
|---------------|--|
| Application: | WB 1:500-1:1000, IF/ICC 1:100-1:500 *The optimal dilutions should be determined by the end user. |
| Reactivity: | Human,Mouse,Rat |
| Storage: | Rabbit IgG in phosphate buffered saline , pH 7.4, 150mM NaCl, 0.02% sodium azide and 50% glycerol. Store at -20 °C. Stable for 12 months from date of receipt. |
| Purification: | The antiserum was purified by peptide affinity chromatography using SulfoLink™ Coupling Resin (Thermo Fisher Scientific). |
| Immunogen: | A synthesized peptide derived from human CSTF1, corresponding to a region within N-terminal amino acids. |
| Uniprot: | Q05048 |



Western blot analysis of extracts from Mouse cancer, using CSTF1 Ab. Lane 1 was treated with the blocking peptide.



DF3241 staining HeLa by IF/ICC. The sample were fixed with PFA and permeabilized in 0.1% Triton X-100, then blocked in 10% serum for 45 minutes at 25°C. The primary Ab was diluted at 1/200 and incubated with the sample for 1 hour at 37°C. An Alexa Fluor 594 conjugated goat anti-rabbit IgG (H+L) Ab, diluted at 1/600, was used as the secondary Ab.

IMPORTANT: For western blot, incubate membrane with diluted primary Ab in 5% w/v milk , 1X TBS, 0.1% Tween@20 at 4°C with gentle shaking, overnight.

For Research Use Only. Not for use in diagnostic and therapeutic procedures. Not for resale without express authorization.