

## ADK Ab

[Images\(3\)](#)

Cat.#: DF3218                                      Concn.: ~1mg/ml                                      Mol.Wt.: 40 KD  
Size:    Source: Rabbit    Clonality: Polyclonal

Application:    WB 1:500-1:1000, IF/ICC 1:100-1:500  
\*The optimal dilutions should be determined by the end user.

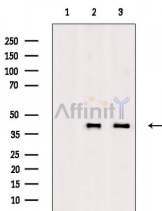
Reactivity:    Human,Mouse,Rat

Storage:    Rabbit IgG in phosphate buffered saline , pH 7.4, 150mM NaCl, 0.02% sodium azide and 50% glycerol. Store at -20 °C. Stable for 12 months from date of receipt.

Purification:                                        The antiserum was purified by peptide affinity chromatography using SulfoLink™ Coupling Resin (Thermo Fisher Scientific).

Immunogen:   A synthesized peptide derived from human ADK, corresponding to a region within N-terminal amino acids.

Uniprot:    P55263

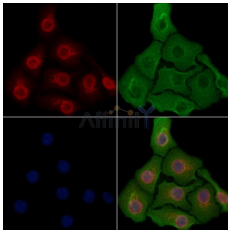


Western blot analysis of extracts from various samples, using ADK Ab.

Lane 1: HeLa cells, blocked with antigen-specific peptides,

Lane 2: HeLa cells,

Lane 3: P19 cells.



DF3218 staining HeLa cells by IF/ICC. The samples were fixed with PFA and permeabilized in 0.1% Triton X-100, then blocked in 10% serum for 45 minutes at 25°C. Samples were then incubated with primary Ab(DF3218) and mouse anti-beta tubulin Ab(T0023) for 1 hour at 37°C. An AlexaFluor594 conjugated goat anti-rabbit IgG(H+L) Ab(Red) and an AlexaFluor488 conjugated goat anti-mouse IgG(H+L) Ab(Green) were used as the secondary Ab.

The nuclear counter stain is DAPI (blue).

**IMPORTANT:** For western blot, incubate membrane with diluted primary Ab in 5% w/v milk , 1X TBS, 0.1% Tween@20 at 4°C with gentle shaking, overnight.

For Research Use Only. Not for use in diagnostic and therapeutic procedures. Not for resale without express authorization.