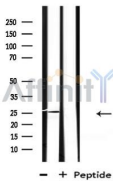


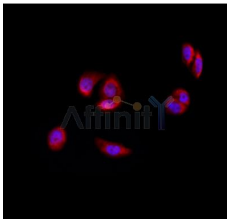
EFNA2 Ab

[References\(2\)](#) [Images\(4\)](#)

Cat.#: AF0335	Concn.: ~1mg/ml	Mol.Wt.: 24kDa
Size:	Source: Rabbit	Clonality: Polyclonal
Application:	WB 1:500-1:3000, IF/ICC 1:100-1:500 *The optimal dilutions should be determined by the end user.	
Reactivity:	Human,Mouse	
Storage:	Rabbit IgG in phosphate buffered saline , pH 7.4, 150mM NaCl, 0.02% sodium azide and 50% glycerol. Store at -20 °C. Stable for 12 months from date of receipt.	
Purification:	The antiserum was purified by peptide affinity chromatography using SulfoLink™ Coupling Resin (Thermo Fisher Scientific).	
Immunogen:	A synthesized peptide derived from human EFNA2, corresponding to a region within N-terminal amino acids.	
Uniprot:	O43921	
Description:	EFNA2 Belongs to the ephrin family. Binds to the receptor tyrosine kinases EPHA3, EPHA4 and EPHA5.	



Western blot analysis of extracts from mouse brain, using EFNA2 Ab.



AF0335 staining HeLa by IF/ICC. The sample were fixed with PFA and permeabilized in 0.1% Triton X-100,then blocked in 10% serum for 45 minutes at 25°C. The primary Ab was diluted at 1/200 and incubated with the sample for 1 hour at 37°C. An Alexa Fluor 594 conjugated goat anti-rabbit IgG (H+L) Ab, diluted at 1/600, was used as the secondary Ab.

IMPORTANT: For western blot, incubate membrane with diluted primary Ab in 5% w/v milk , 1X TBS, 0.1% Tween@20 at 4°C with gentle shaking, overnight.



Affinity Biosciences
website: www.affbiotech.com
order: order@affbiotech.com

procedures. Not for resale without express authorization.