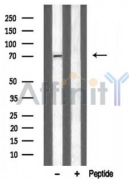


## Adrenergic Receptor alpha -2C Ab

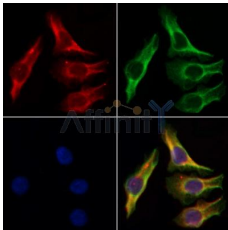
[Images\(2\)](#)

Cat.#: DF3108                              Concn.: ~1mg/ml                              Mol.Wt.: 70 KD  
Size:    Source: Rabbit                                      Clonality: Polyclonal

Application:                              WB 1:500-1:1000, IF/ICC 1:100-1:500  
\*The optimal dilutions should be determined by the end user.  
Reactivity:                                      Human, Mouse, Rat  
Storage:    Rabbit IgG in phosphate buffered saline , pH 7.4, 150mM NaCl, 0.02% sodium azide and 50% glycerol. Store at -20 °C. Stable for 12 months from date of receipt.  
Purification:                                      The antiserum was purified by peptide affinity chromatography using SulfoLink™ Coupling Resin (Thermo Fisher Scientific).  
Immunogen:                                      A synthesized peptide derived from human Adrenergic Receptor alpha -2C, corresponding to a region within the internal amino acids.  
Uniprot:    P18825



Western blot analysis of Adrenergic Receptor  $\alpha$ -2C expression in mouse brain lysate



DF3108 staining HeLa by IF/ICC. The samples were fixed with PFA and permeabilized in 0.1% Triton X-100, then blocked in 10% serum for 45 minutes at 25°C. Samples were then incubated with primary Ab (DF3108 1:200) and mouse anti-beta tubulin Ab (T0023 1:200) for 1 hour at 37°C. An AlexaFluor594 conjugated goat anti-rabbit IgG (H+L) Ab (Red) and an AlexaFluor488 conjugated goat anti-mouse IgG (H+L) Ab (Green) were used as the secondary Ab. The nuclear counter stain is DAPI (blue).

**IMPORTANT:** For western blot, incubate membrane with diluted primary Ab in 5% w/v milk , 1X TBS, 0.1% Tween@20 at 4°C with gentle shaking, overnight.

For Research Use Only. Not for use in diagnostic and therapeutic procedures. Not for resale without express authorization.